



CAP II



76'8" (23.4 m)CNB

LOA:	76'8" (23.4 m)	Year:	Mfg-1992 Model-1992
Mfg.Length:	76'8" (23.4 m)		Refit-2005
Beam:	19'9" (6 m)	Mfg:	CNB
Draft:	Min 8'2" (2.5 m)	Model:	Sloop
	Max 8'2" (2.5 m)	Type:	Cruising Sailboat
Clearance:		Staterooms:	4
Hull Mtrl:	Aluminum	Fuel Cap:	600 g (2271 l)
Hull Cnfg.:	Fin Keel	Water Cap:	450 g (1703 l)
Designer:	Phillppe Briand	Engines:	1xCummins
Tonnage:	48		6B5-9-M
Rig:	Sloop		115 HP
Cockpit:	Center & Aft	Speed:	Cruise 10 knots /
Flag:	Marshall Islands	Price:	1,400,000 USD
Location:	St. Maarten, Netherlands Antilles		

The Sacks Group Yachting Professionals
 1600 SE 17th Street
 Suite 418
 Fort Lauderdale, Florida 33316
 United States
 7/10/2008

Phone: 954-764-7742
 Fax: 954-523-3769
 Email: brokerage@sacksyachts.com
 URL: <http://www.sacksyachts.com>

Vessel Walkthrough

Starting at the aft companionway and going down several steps, there are two double staterooms, each with en-suite heads and showers. One of these cabins is a crew's cabin with a navigation station. Going forward, a center cockpit companionway leads into a large area with another double cabin with head and shower to port. The galley is to starboard and forward of the galley to port is a large dining table with wrap around seating. On the port side is a settee with a coffee table. Continuing forward, are two double guest cabins with en-suite heads and showers. Forward of the guest cabins there are two crew berths.

Accommodations

There are four double staterooms, each with an en-suite head, one double crew cabin aft with a head and two crew bunks forward in the sail locker. The forward staterooms have a removable bulkhead which can turn the area into a large stateroom with two queen size beds and two heads.

Galley

The galley is lined with wood cabinetry and has a Force 10 four burner propane stove with oven, an Emerson microwave, and Grunert 220 volt freezer and refrigerator.

Mechanical

"Cruisair" 24,000 BTU air conditioning in salon and galley, new compressor in 2006.
"Marine air Systems" - cold water "Chiller System" 36,000 BTU in cabins.
Borg Warner Velvet Drive 72C gearbox, new in 2003
60 mm Monel shaft to rigid gearbox coupling
Luke three bladed bronze variable pitch propeller with a spare
Xintex-2A propane and CNG fume detector
20 gal. Raritan 220 volt water heater
Echo-Tec reverse osmosis water maker
Caliber XR-124 68 PSI pressure pump with fiberglass pressure tank for pressurized water system

Electronics and Navigational Equipment

Furuno GP32 GPS with chart plotter. The GPS is linked to a PC with chart data-cockpit display.
New in 2007
Simrad Robertson AP201 linear drive with a remote control autopilot
Brooks & Gatehouse Hydra 2000 depth, speed and wind- in cockpit
Brooks & Gatehouse Hydra depth, speed and wind- in navigation station
ICOM IC-M502 VHF
Furuno FS-1550 SSB transceiver
Globalstar satellite telephone- marine installed
Iridium hand held satellite telephone
Furuno 36 mile radar

accuracy of this information nor warrant the condition of the vessel. A buyer should instruct his agents, or his surveyors, to investigate such details as the buyer desires validated. This vessel is offered subject to prior sale, price change, or withdrawal without notice.

The Sacks Group Yachting Professionals
1600 SE 17th Street
Suite 418
Fort Lauderdale, Florida 33316
United States
7/10/2008

Phone: 954-764-7742
Fax: 954-523-3769
Email: brokerage@sacksyachts.com
URL: <http://www.sacksyachts.com>

Galley



Salon 1



Salon 2



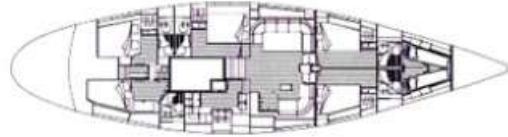
Guest Stateroom



Under Sail



Deck plan



Other

