

<http://yachtworld.com/curtisstokes>

Captain Mark D. Welsh  
1323 SE 17th St  
Suite168  
Ft. Lauderdale, FL 33316 United States

Tel (410) 645-0007  
Tel 954-684-0218  
Fax (954) 320-6942  
Email [mark@curtisstokes.net](mailto:mark@curtisstokes.net)

---



*AIN'T SETTLIN'*

### 40' Formula 40 PC

- Year: 2007
- **Current Price:**  
**US\$ 220,000** (11/18)
- Located in St Michaels, MD
- Hull Material: Fiberglass
- Engine/Fuel Type: Twin diesel
- YW# 77126-3478761

- Single owner, low hours, Formula 40 Performance Cruiser ... this 2007 shows like a much newer boat ... absolutely gorgeous!
- **AIN'T SETTLIN'** is a very roomy cruiser with a massive salon and galley area (with 6'-9" of headroom), large staterooms forward and aft, and a huge covered cockpit.
- Powered by twin Volvo Penta, 6-cylinder, 5.5-liter, turbo diesels with 740 combined HP matched to IPS steerable pods with twin counter-rotating propellers she offers excellent maneuverability (including joystick docking).
- **AIN'T SETTLIN'** will cruise effortlessly at 25 knots and will exceed 40 knots if you let her run.
- Please see **Full Specifications** for a comprehensive list of features.

> Mark Welsh is a yacht broker with Curtis Stokes & Associates, Inc. based in St. Michaels, MD and a local charter captain. Specializing in yacht sales in Maryland, Pennsylvania and Delaware, Mark offers professional, honest, discreet and personal assistance to a select group of clients and customers.

> Please contact Captain Mark D. Welsh at (410) 645-0007

## Additional Specs, Equipment and Information:

### Dimensions

LOA: 42.58 feet

Beam: 12.67 feet

Bridge Clearance: 14.5 feet

### Engines

Engine Power: 740 HP

Cruising Speed: 25 knots

Maximum Speed: 42 knots

### **Tankage**

Fuel: 250 gallon

Water: 55 gallon

Holding: 57 gallon

### **DECK & HULL**

- Hull Type: Modified Vee
- Hull Material: Fiberglass
- Hull Finish: Flagship Imron Graphic
- Hull Color: Black Cherry Metallic
- Deck Material: Fiberglass
- Swim Platform: Fiberglass (w/ retractable swim ladder)
- Transom Shower: Hot & Cold
- Underwater Lights
- Sun Lounging Pads: 2 (on bow)
- Fenders
- Dock Lines
- Search Light: ACR (Wired to Helm)
- Bow Rail
- Anchor Locker
- Windlass: Lewmar (w/ Remote Chain Counter at Helm)
- Anchor Washdown
- Anchor Roller
- Anchor: Stainless Steel Claw (15 Kg)
- Anchor Rode: 200' Chain

### **COCKPIT**

- Bimini: Canvas
- Enclosure: Eisenglass
- Sink (w/ Cold Water Tap)
- Refrigerator: Stainless Steel
- Dining Table (Removable)
- Seating: 2 Person Helm Bench (to Starboard), Lounge (to Port), Wraparound Seating (Aft)

### **MECHANICAL**

- Steering: Power Hydraulic (w/ Dino Mahogany Tilt Steering Wheel)
- Air Conditioning: 16,000 BTU Reverse Cycle (w/ Digital Climate Control)
- Oil Transfer System: Reverso
- Fire Suppression System: Fireboy
- Trim Tabs: Bennett Hydraulic (w/ Indicator at Helm)
- Bow Thruster

### **ELECTRICAL**

- Ship Power: 12 Volt

- Battery Charger: Charles 80 Amp
- Shore Power: Dual 30 Amp
- Shore Power Cables: (2) 30 Amp

#### **Batteries ...**

- House: 1
- Engine: 2

#### **Generator ...**

- Generator Manufacturer: Westerbeke
- Generator Model: 7.6 KW / 120 V
- Generator Model Year: 2007
- Generator Hours: 53

#### **NAVIGATION**

- Compass: Ritchie (at Helm)
- VHF: Icom IC-M424G (at Helm)
- Radar: Raymarine
- Chart Plotter: Raymarine C80 (at Helm)
- Depth Sounder: Raymarine ST60

#### **ENTERTAINMENT & CONVENIENCE**

- TV: Sharp (in Salon), Toshiba (in Master Stateroom)
- Stereo: Kenwood (w/ Remote at Helm) and Speakers in Cabin & Cockpit (w/ Subwoofer)
- Central Vacuum: Walvac

#### **STATEROOMS & HEADS**

- # of Staterooms: 2
- # of Shared Heads: 1

#### **Stateroom #1 ...**

- Location: Forward
- Berth: Queen
- Hanging Locker (to Straboard)
- Storage Lockers (to Port and Under Berth)
- Port Holes: 2 (w/ Curtains)
- Hatches: 1
- Hatch Covers (Screens and Blackout)

#### **Stateroom #2 ...**

- Location: Aft
- Berth: Queen (Convertible)
- Hanging Locker (to Starboard)
- Port Holes: 1 (w/ Curtain)

### **Shared Head #1 ...**

- Sink: Single, Stainless Steel
- Shower: Separate Stall
- Toilet: VacuFlush

### **GALLEY**

- Countertop: Corian
- Cooktop: Kenyon/EuroKera 2 Burner Electric
- Microwave: Tappan
- Refrigerator/Freezer: Nova Kool RFS7501 7.5 CU FT AC/DC Side By Side
- Sink: Single, Stainless Steel

### **DISCLAIMER**

The Company offers the details of this vessel in good faith but cannot guarantee or warrant the accuracy of this information nor warrant the condition of the vessel. A buyer should instruct his agents, or his surveyors, to investigate such details as the buyer desires validated. This vessel is offered subject to prior sale, price change, or withdrawal without notice.

*Last Revised: Nov 02, 2018*



> Photo 2



> Photo 3



> Photo 4



> Photo 5



> Photo 6



> Photo 7



> Photo 8



> Photo 9



> Photo 10



> Photo 11



> Photo 12



> Photo 13



> Photo 14



> Photo 15



> Photo 16



> Photo 17



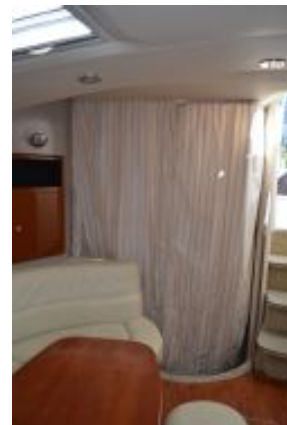
> Photo 18



> Photo 19



> Photo 20



> Photo 21



> Photo 22



> Photo 23



> Photo 24



> Photo 25



> Photo 26



> Photo 27





> Photo 28



> Photo 29



> Photo 30



> Photo 31