



Glacier Bay 2685 Coastal Runner – Unchanged Melody

Make:	Glacier Bay	Model:	2685 Coastal Runner
Location:	North Beach, MD, United States	Price:	\$ 55,000
Length:	26 ft 1 in	Year:	2005
Beam:	8 ft 9 in	Hull Material:	Fiberglass
		Fuel Type:	Gas/Petrol

Unchanged Melody

This 26' Glacier Bay 2685 is a very lightly used, lift kept, 2005 Coastal Runner. She has twin 140 HP Suzuki 4/stroke outboard engines. Ordered and purchased new by her current owner she was outfitted with top shelf electronics, gear and custom features. Unchanged Melody has a double berth on the starboard side forward, 7000 BTU AC/Heat, electric remote windlass, hardtop with rocket launchers, extended swim platform, rails and ladder. Her sleeper dinette also has a Norcold refrigerator below and plenty of storage. Almost every factory option offered is aboard, she is ready to take you cruising, off shore fishing or enjoying all the family water sports you can fit into a weekend.

Measurements

Range:	290 mi	Seating Capacity:	4
LWL:	26 ft 1 in	Fuel Tanks Capacity:	180 gal
Beam:	8 ft 9 in	Fresh Water Tanks Capacity:	22 gal
Min. Draft:	1 ft 7 in	Holding Tank Capacity:	15 gal
Dry Weight:	5290 lb	Number of double berths:	1
		Number of Cabins:	1
		Number of Heads:	1

Propulsion

Engine #1

Engine Make:	Suzuki	Engine Year:	2004
Engine Model:	14001F 424973	Hours:	unknown
Primary Engines:	Outboard-4S	Power:	140 hp
Location:	Port		

Engine #2

Engine Make:	Suzuki	Engine Year:	2004
Engine Model:	14001F 424972	Hours:	unknown
Primary Engines:	Outboard-4S	Power:	140 hp
Location:	Starboard		

Glacier Bay 26' 2685 Coastal Runner, Cuddy Hardtop Description

The M/V Unchained Melody combines the best features of a power cat built by Glacier Bay. She has a longer hard top which offers sun and additional weather protection. The optional dinette/galley of a 2690 with the open air feeling of the 2680. A stainless-steel radar arch with four rocket launchers and drop curtain make her helm area a very functional space. When combined with the optional creature comforts she makes a great platform for just about anything on the water.

Glacier Bay 26' Standard Equipment

- Foam filled double bottom hulls
- Self bailing cockpit
- Queen-sized cuddy bed
- Extended fiberglass hardtop w/ welded windshield system
- Hardtop SS handrails
- Canvas drop curtain enclosure
- Cuddy seat & reading light
- Marine head w/ holding tank
- Teak storage cabinet w/ drawer
- Port side settee w/ cooler
- Freshwater system - water tank
- Salt water washdown
- 32 gallon livewell w/ window
- Livewell seat cushion
- Two insulated fishwells with pumps
- Dual battery switch
- Tinted curved windshield w/ wipers
- Cuddy opening port lights (2)
- Opening deck hatches (2)
- Stainless steel and chromed bronze hardware

Glacier Bay 26' Optional Equipment

- 140 hp Suzuki engines
- SS half tower w/ rod holders
- Swim platform w/ ladder
- Bow pulpit w/ roller
- 12 V windlass (pulpit required)
- Dinette/sleeper/refrigerator module
- 4 speaker marine stereo
- Air conditioning
- Garmin GPS/Chartpotter/Radar/Sounder

Disclaimer

The Company offers the details of this vessel in good faith but cannot guarantee or warrant the accuracy of this information nor warrant the condition of the vessel. A buyer should instruct his agents, or his surveyors, to investigate such details as the buyer desires validated. This vessel is offered subject to prior sale, price change, or withdrawal without notice.

Photos



Glacier Bay 2685 Coastal Runner Profile



Glacier Bay 2685 Coastal Runner Profile



Glacier Bay 2685 Coastal Runner Lift stored



Glacier Bay 2685 Coastal Runner Lift stored



Glacier Bay 2685 Coastal Runner Anchor and roller



Glacier Bay 2685 Coastal Runner Anchor locker



Glacier Bay 2685 Coastal Runner Remote search light



Glacier Bay 2685 Coastal Runner Bow area



Glacier Bay 2685 Coastal Runner Port bow



Glacier Bay 2685 Coastal Runner Port gunwal



Glacier Bay 2685 Coastal Runner Starboard gunwal



Glacier Bay 2685 Coastal Runner Engine covers



Glacier Bay 2685 Coastal Runner Transom



Glacier Bay 2685 Coastal Runner Swim platform, rails and ladder



Glacier Bay 2685 Coastal Runner Helm area



Glacier Bay 2685 Coastal Runner Helm controls



Glacier Bay 2685 Coastal Runner Throttles and clutches



Glacier Bay 2685 Coastal Runner Wet bar and prep area



Glacier Bay 2685 Coastal Runner DC Panel



Glacier Bay 2685 Coastal Runner Garmin



Glacier Bay 2685 Coastal Runner ICOM VHF



Glacier Bay 2685 Coastal Runner Poly Planar



Glacier Bay 2685 Coastal Runner Windlass remote



Glacier Bay 2685 Coastal Runner Dinette and Sleeper



Glacier Bay 2685 Coastal Runner Dinette and Sleeper



Glacier Bay 2685 Coastal Runner Refrigerator



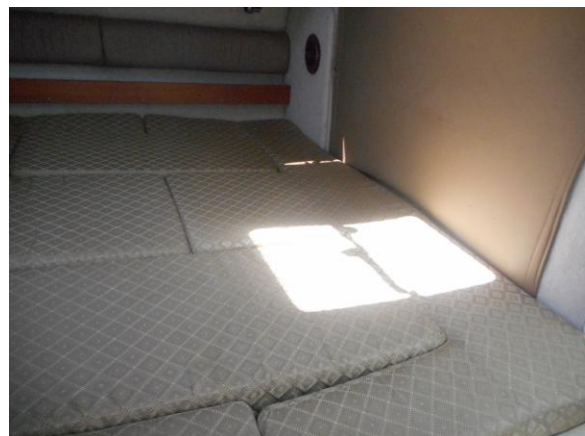
Glacier Bay 2685 Coastal Runner Dinette storage



Glacier Bay 2685 Coastal Runner AC Panel



Glacier Bay 2685 Coastal Runner Berth forward



Glacier Bay 2685 Coastal Runner Berth aft view



Glacier Bay 2685 Coastal Runner Head