



Mainship 34 MK I Trawler – My Way

Make:	Mainship 34	Model:	MK I Trawler
Location:	Marblehead, OH, United States	Price:	\$ 38,500
Length:	34 ft	Year:	1978
Beam:	11 ft 11 in	Hull Material:	Fiberglass
		Fuel Type:	Diesel

My Way

The M/V "My Way" is a Mainship MK I which is one of the most popular small cruisers ever built. Inside the salon you will find a roomy practical floor plan with a single-stateroom forward, galley down to port, a lower helm station to starboard and two couches that convert into jacket knife beds in the salon. The head incorporates a hot/cold shower stall. She is constructed on a solid fiberglass laminate and her decks are sandwich construction with fiberglass outer layers and a balsa wood core. My Way's semi-displacement hull with a deep forefoot, slightly rounded bilges and a long full length keel closely resembles a down east style cruiser. This 34 MK I design has great appeal and had much to do with her trawler like features and sea going characteristics, she can handle the blue water. This combined with her superb fuel economy at better than trawler speeds (a semi-displacement hull) made her a very popular vessel. At a cruise speed of 8 knots her 200-hp Chrysler diesel burns only 2.5 gallons per hour.

Additional features include a teak swim platform, swim ladder, wide, safe, easy to access side decks, a comfortable aft deck, with a hardtop from the fly bridge that extends several feet over the aft cockpit, a fly bridge, one of the best parts of My Way which comfortably seats 6 to 8 and an Edson radar mast that is hinged for a lower air draft during your great loop adventure or weekend cruising. My Way will serve you well. There were over 900 of these MK 34's built over the ten year production cycle a testament to their construction, durability and customer satisfaction. Classically styled boats have enjoyed a resurgence over the last decade and the Mainship 34' My Way is a combination of good styling, comfortable accommodations, economical performance, reasonably priced and she is in great condition having spent all of her time in Lake Erie's fresh water.

Measurements

Cruising Speed:	8 kn	Fuel Tanks Capacity:	220 gal
Cruising Speed RPM:	1750	Fuel Tanks Material:	Aluminum
Max Speed:	14 kn	Fresh Water Tanks Capacity:	35 gal
Max Speed RPM:	3150	Fresh Water Tanks Material:	Plastic
Range:	550 nmi	Holding Tank Capacity:	17 gal
LOA:	34 ft	Number of single berths:	1
Beam:	11 ft 11 in	Number of double berths:	2
Max Bridge Clearance:	13 ft 6 in	Number of Cabins:	1
Min. Draft:	2 ft 10 in	Number of Heads:	1
Cabin Headroom:	6 ft 3 in		
Dry Weight:	14000 lb		

Propulsion

Engine #1

Engine Make:	Chrysler	Engine Year:	1978
Engine Model:	CM 655-TI-II	Hours:	2800
Primary Engines:	Inboard	Power:	200 hp
Drive Type:	Direct Drive	Propeller Type:	3 Blade

Accommodations

One stateroom in the forward cabin

Full size berth lower starboard side

Single berth upper port side

Newer soft goods

1x hanging lockers

Two settees in salon both convert to jack knife beds

Galley & Head

2x Burner electric Princess stove

SS Sink

Litton microwave oven

Norcold refrigerator / freezer AC/DC

Hot / cold galley sink, vanity and shower

Separate shower stall

Head manual pump

Electronics & Entertainment

Lower Helm

VHF Polaris radio with 8db antenna

Intercom and hailer

Compass

Upper Helm

VHF Icom radio with intercom and hailer

Compass

Auto pilot Benmar 21

Ray Radar model # RL 9 LCD

Kenwood stereo AM/FM/CD

Salon

Pioneer Stereo AM/FM/CS w/remote

13" Symphonic TV

Marine TV antenna with amplifier

Electrical

Kohler model #3A027 3 KW

Guest battery charge 15 AMP, 2x banks

2x electric heaters (resistance heaters)

16,500 BTU AC with reverse cycle heat

1x 30 AMP (dock side) power cord

AC refrigerator/freezer in cockpit

Safety & Deck Equipment

4x Adult life jackets

Hand held search light

Ring Buoy and cushion

Smoke detectors

2x Atwood 500 and 600 GPH bilge pumps

Dock lines 4x 15' and 2x 25' 1/2 diameter

Dual trumpet electric horns

Danforth anchor

5' chain and 150' Rode

Mechanical Equipment

Chrysler diesel model # CM655-TI

Rated @ 200 hp 3150 RPM

Approx hours 2,800+ hours

7.5-8.0 Knots @ 1750 RPMs

Fuel burn 2.5 GPH @ Cruise

14 Knots @ WOT

Range 500+ miles

Spare 3x Bladed bronze prop

Fuel polishing filters

Sea strainers on main, gen set and AC

Trim tabs w/controls at upper and lower stations

Canvas & General

Cockpit covers

Clear Eisenglass - 5x zippered panels

Black Sunbella - 5x zippered panels

Screens / sunshade (white) - 5x zippered panels

White sail cloth enclosure - 2x zippered panels

Other canvas

Windshield Covers - 2x (white and black)

Fly bridge mooring cover

General

Deck box with cushion for seating in aft cockpit

3x Folding deck chairs

High / Low table on casters

Edson fold down radar mast for lower air draft

Tinted windows - salon sides, sliding door and window panels

Disclaimer

The Company offers the details of this vessel in good faith but cannot guarantee or warrant the accuracy of this information nor warrant the condition of the vessel. A buyer should instruct his agents, or his surveyors, to investigate such details as the buyer desires validated. This vessel is offered subject to prior sale, price change, or withdrawal without notice.

Photos



Mainship MK I Starboard profile



Mainship MK I Port profile



Mainship MK I Stern w/eisenglass



Mainship MK I Bow view forward



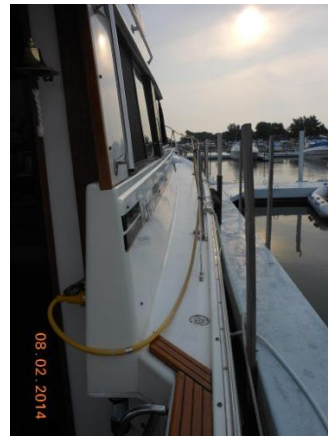
Mainship MK I Fly Bridge



Mainship MK I Upper helm



Mainship MK I Fly bridge view stern



Mainship MK I Starboard gunwale



Mainship MK I Salon forward



Mainship MK I Lower station



Mainship MK I Salon port side



Mainship MK I Galley



Mainship MK I Stateroom



Mainship MK I Galley looking aft



Mainship MK I Head



Mainship MK I Salon port side



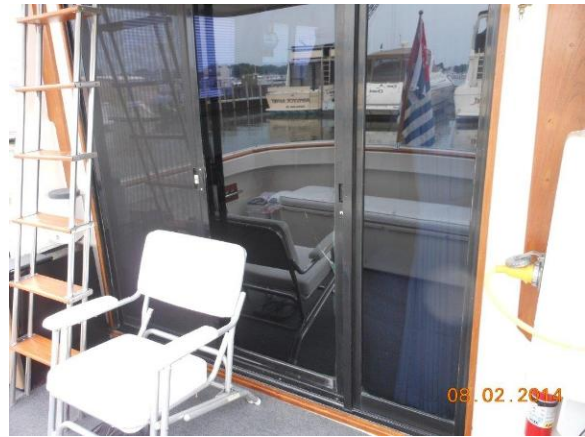
Mainship MK I Salon starboard side



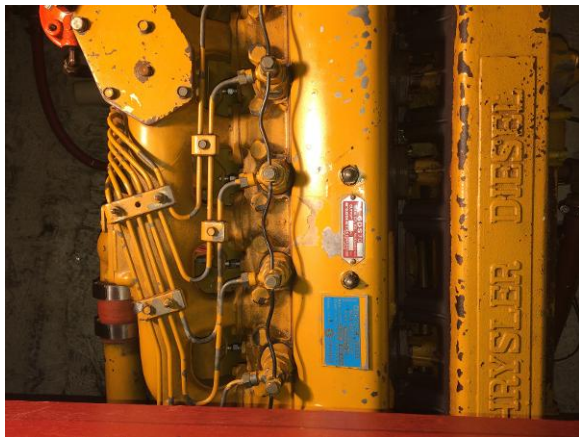
Mainship MK I Salon looking aft



Mainship MK I Cockpit seating



Mainship MK I Salon slider



Mainship MK I Main diesel



Mainship MK I Gen set